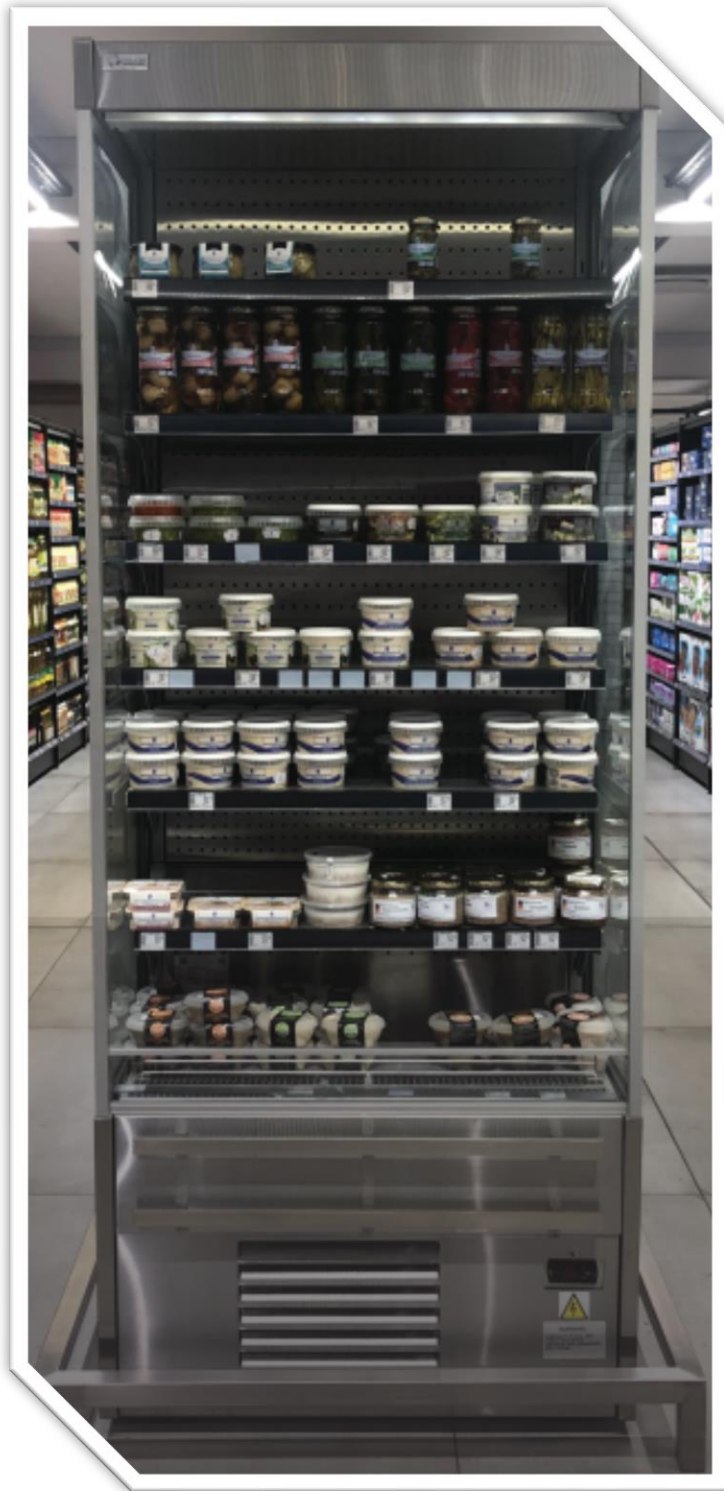




Insulated Structures

Efficiency At Work

GONDOLA UPRIGHT SELF-CONTAINED



| Standard Specifications | |
|-----------------------------------|----------------------------------|
| • 5 Unlit Stainless Steel Shelves | • 2 x Probes (Air Off & Defrost) |
| • Canopy LED | • Standard Coil |
| • Glass Patch Ends | • Aluminum Ticket Rail |
| • Shaded Pole Fans | • Electronic Display |
| • Valves (Brass Thermostatic) | |

| Optional Specifications |
|----------------------------|
| • Shelf Lights: FR5 NW-24V |
| • ECM Fans |

Leaders in world class innovation for bespoke end to end energy efficient refrigeration solutions



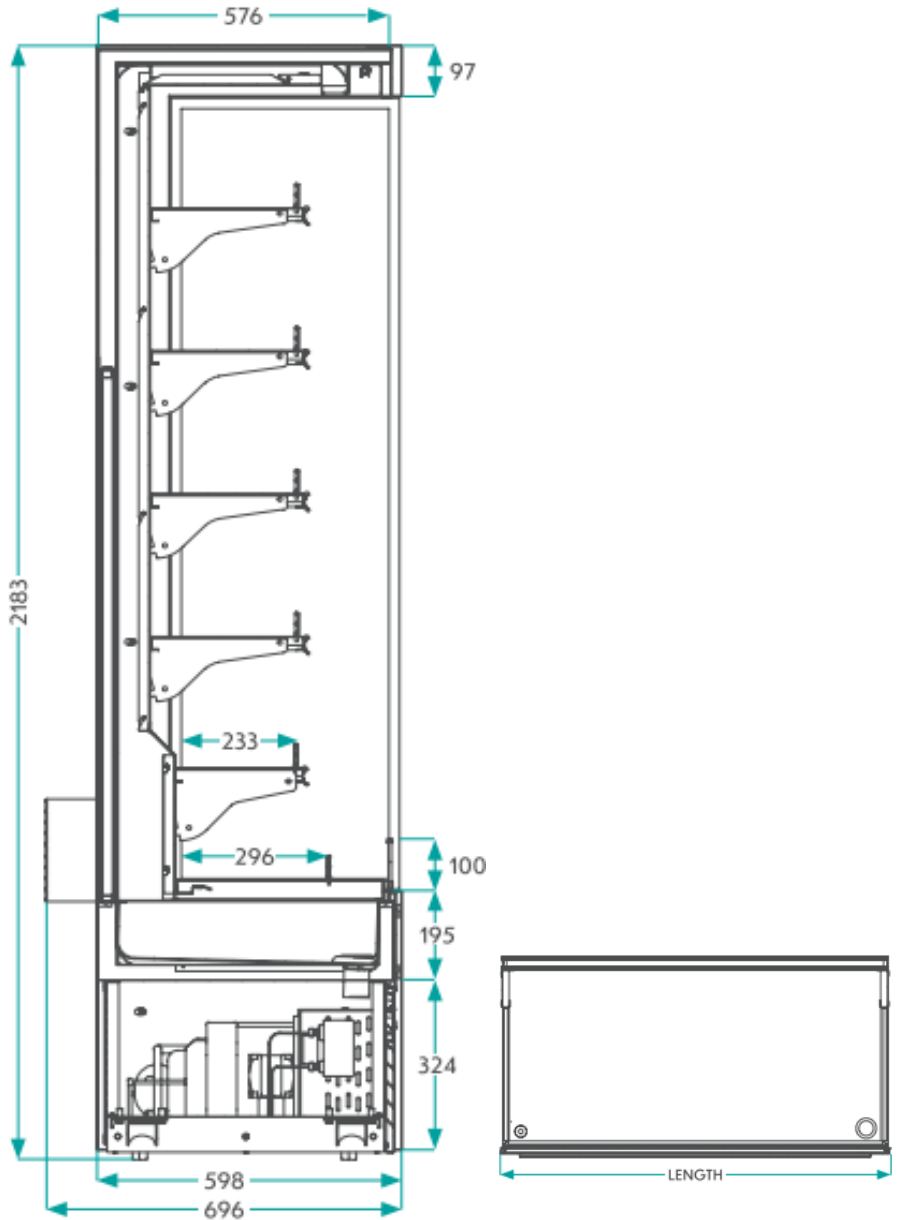
Insulated Structures
Efficiency At Work



Insulated Structures

Efficiency At Work

GONDOLA UPRIGHT SELF-CONTAINED



| Physical Properties | | |
|---------------------|------------|-----------------------|
| Size | Length (m) | TDA (m ²) |
| 3ft | 825 | 1.26 |
| 4ft | 1160 | 1.90 |
| 6ft | 1770 | 2.86 |

| Electrical Specifications | | | | |
|---------------------------|-------------------------|---------------------------|------------------------|----------------|
| Evaporator Fans | Circulation Fans (3656) | Condensing Units | Heaters (Boil-Off Pan) | Lighting (LED) |
| 2xØ200-28°/36W | 1 x 12W | C1138-48365-CAJ9510-928W | 1 x 1000W | 1 x 18W |
| 2xØ200-28°/36W | 1 x 12W | HQHD-23KAR-1150W (Normal) | 1 x 1000W | 1 x 25W |
| 3xØ200-28°/36W | 1 x 12W | HQHD-30KAR-1400W (Normal) | 1 x 1500W | 2 x 18W |

| Refrigeration Requirements | | | | | | | |
|----------------------------|---------------|------------------|-----------------|-----------|--------------|---------------|---------------------|
| Gas Type | Refrigeration | Evaporation Temp | Controller Type | Set-Point | Differential | Defrost Cycle | Defrost Termination |
| R22 or R40 AA | 460W/ft | -5 °C | Carel | -1.5 °C | 4 | 20min / 4hrs | 8 °C |

Leaders in world class innovation for bespoke end to end energy efficient refrigeration solutions

